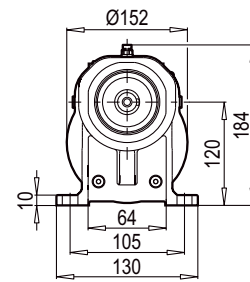
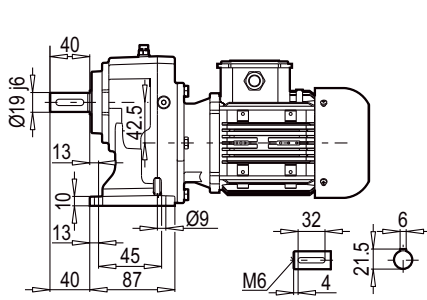
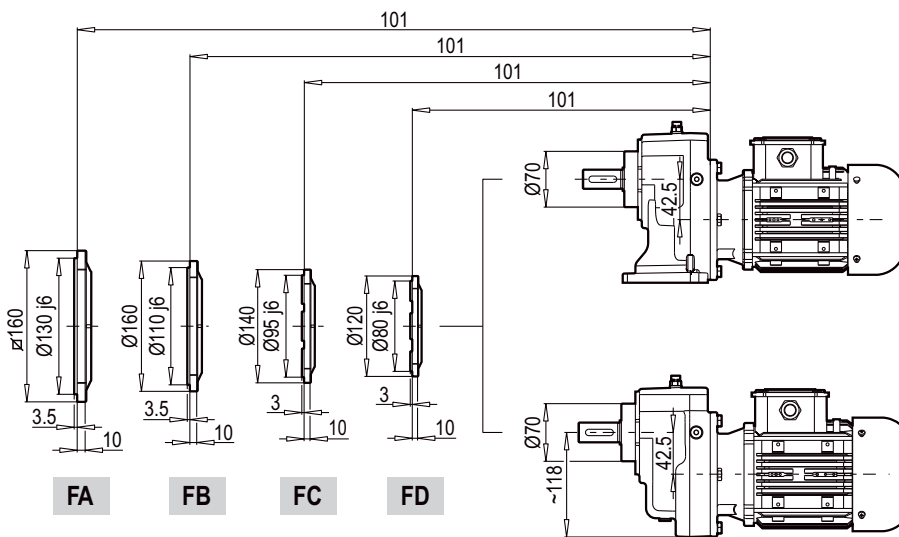
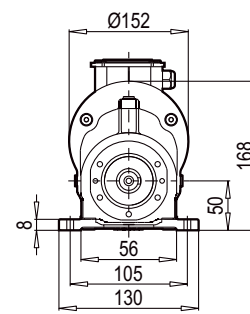
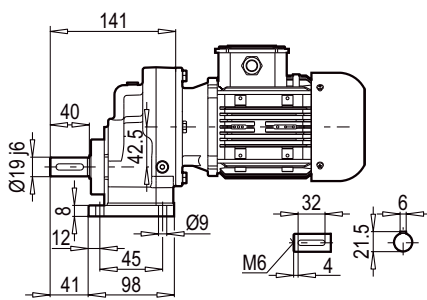


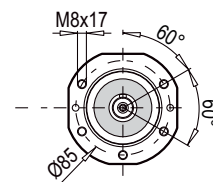
**A 301**



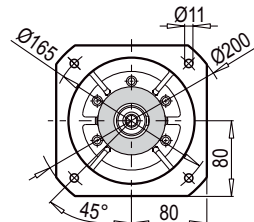
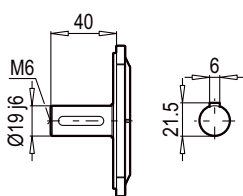
**AF-M 301**



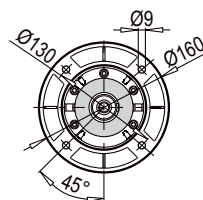
**AF 301**



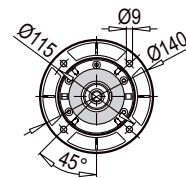
**F 301**



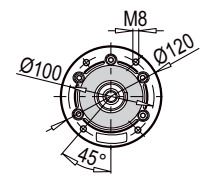
**FA**



**FB**

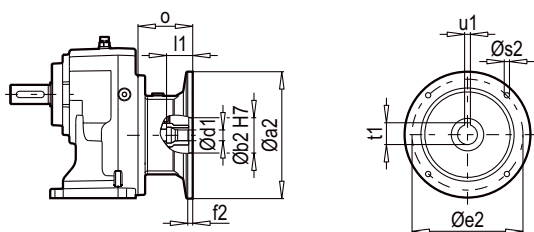


**FC**

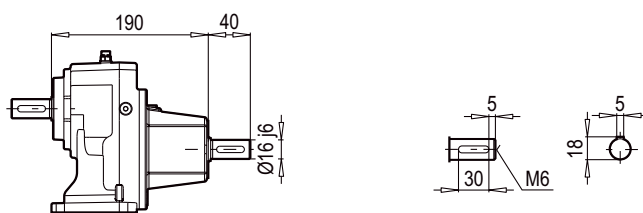


**FD**

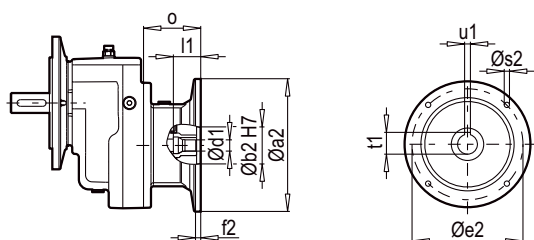
**A 301 PAM B5/B14**



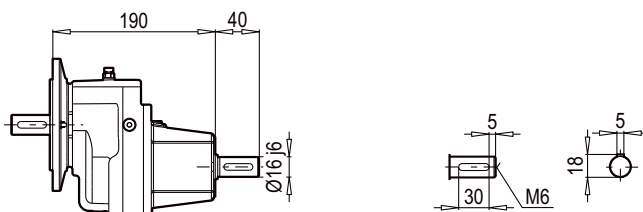
**A 301 W**



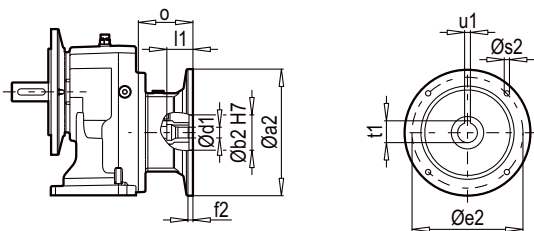
**F 301 PAM B5/B14**



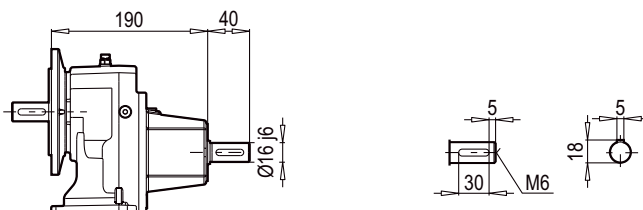
**F 301 W**



**AF 301 PAM B5/B14**

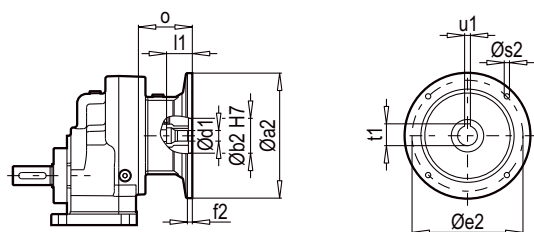


**AF 301 W**

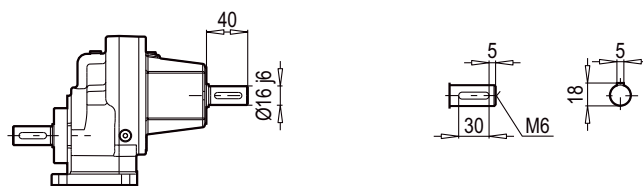


W ~ Kg	
A/F 301	10

**AF-M 301 PAM B5/B14**



**AF-M 301 W**



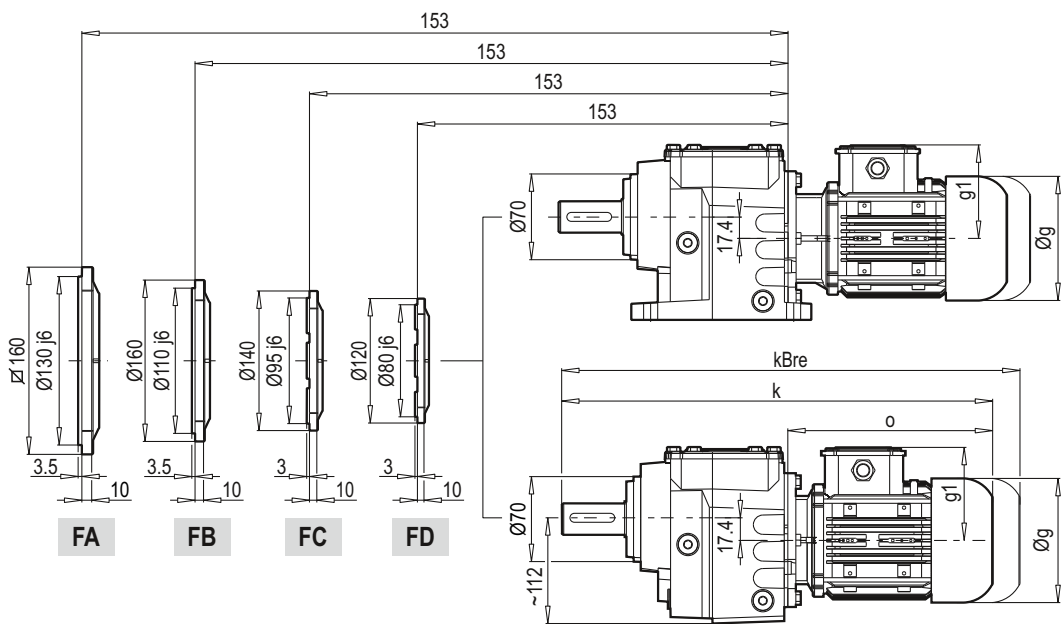
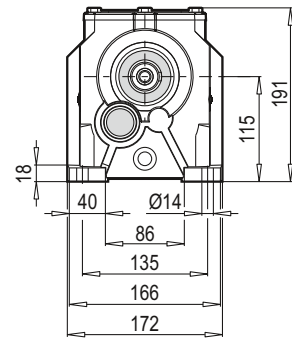
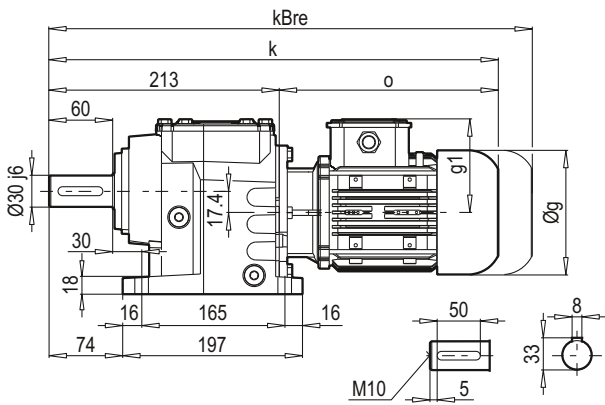
Typ / Type / Tipo Type / Tipo	PAM B5	Øa2	Øb2	Øe2	f2	Øs2	Ød1	l1	t1	u1	o
A/F 301	71	160	110	130	5	M8	14	32	16.3	5	69
	80	200	130	165	5	M10	19	42	21.8	6	90
	90	200	130	165	5	M10	24	52	27.3	8	90

~ Kg	
PAM B5	A/F 301
71	6
80	6.5
90	6.5

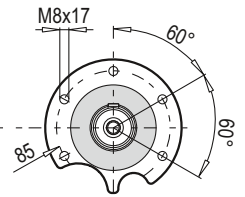
Typ / Type / Tipo Type / Tipo	PAM B14	Øa2	Øb2	Øe2	f2	Øs2	Ød1	l1	t1	u1	o
A/F 301	63	90	60	75	2.5	6	11	32	16.3	5	69
	71	105	70	85	2.5	7	14	42	21.8	6	90
	80	120	80	100	3	7	19	52	27.3	8	90

~ Kg	
PAM B14	A/F 301
63	5
71	5.5
80	5.5

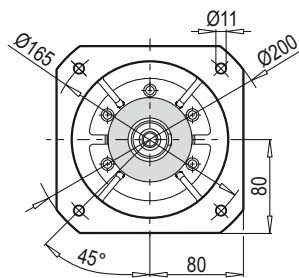
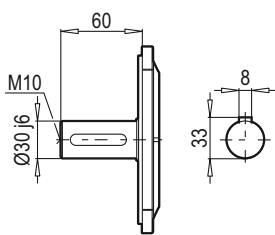
**A 302-303**



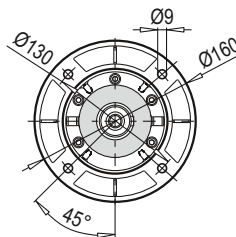
**AF 302-303**



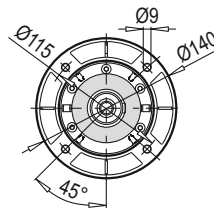
**F 302-303**



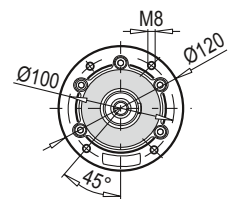
**FA**



**FB**



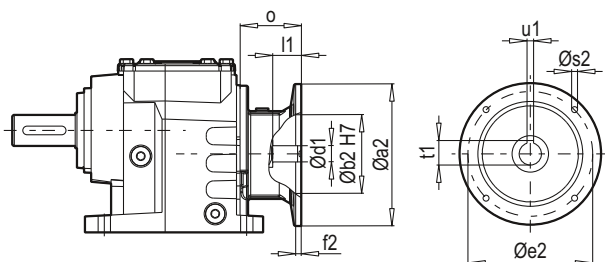
**FC**



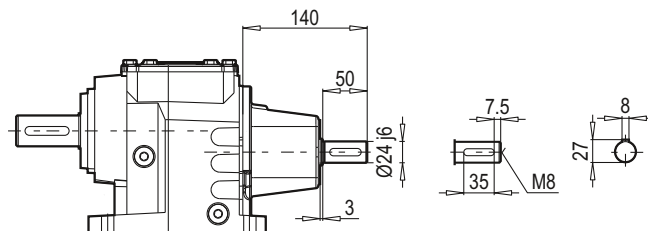
**FD**

# A/F 302- 303

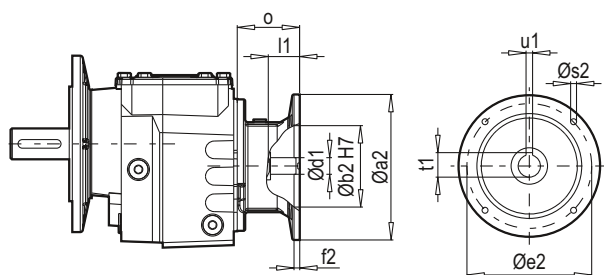
## A 302-303 PAM B5/B14



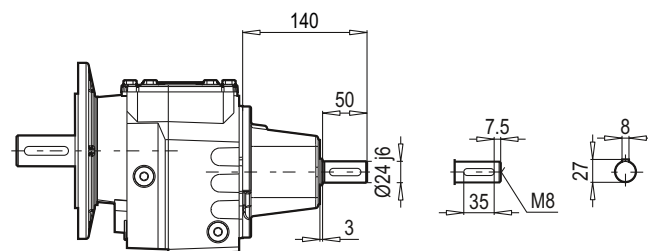
## A 302-303 W



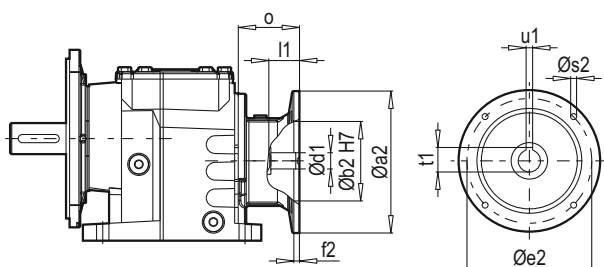
## F 302-303 PAM B5/B14



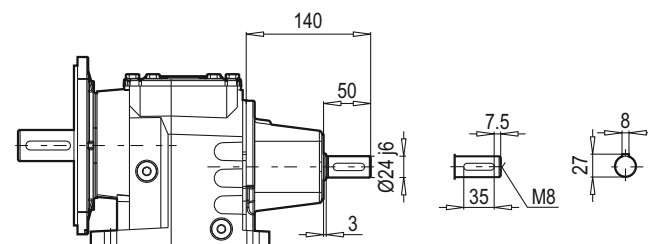
## F 302-303 W



## AF 302-303 PAM B5/B14



## AF 302-303 W



W ~ Kg	
A/F 302-303	17

Typ / Type / Tipo Type / Tipo	PAM B5	Øa2	Øb2	Øe2	f2	Øs2	Ød1	l1	t1	u1	o
A/F 302 A/F 303	63	140	95	115	4.5	M8	11	25	12.8	4	57
	71	160	110	130	5	M8	14	32	16.3	5	69
	80	200	130	165	5	M10	19	42	21.8	6	90
	90	200	130	165	5	M10	24	52	27.3	8	90
	100	250	180	215	5.5	M12	28	62	31.3	8	105
	112	250	180	215	5.5	M12	28	62	31.3	8	105

~ Kg	
PAM B5	A/F 302-303
63	15
71	16
80	17
90	17
100	21
112	21

Typ / Type / Tipo Type / Tipo	PAM B14	Øa2	Øb2	Øe2	f2	Øs2	Ød1	l1	t1	u1	o
A/F 302 A/F 303	63	90	60	75	2.5	6	11	25	12.8	4	57
	71	105	70	85	2.5	7	14	32	16.3	5	69
	80	120	80	100	3	7	19	42	21.8	6	90
	90	140	95	115	3	9	24	52	27.3	8	90
	100	160	110	130	3.5	9	28	62	31.3	8	105
	112	160	110	130	3.5	9	28	62	31.3	8	105

~ Kg	
PAM B14	A/F 302-303
63	14
71	15
80	16
90	16
100	17
112	17

Редуктор	i	4- пол. 50Гц 1400об/мин n <sub>2</sub> [об/мин]	M <sub>a</sub> макс f <sub>B</sub> =1 4 - пол. [ Нм ]	P <sub>1</sub> макс W f <sub>B</sub> ≥ 1			PAM - IEC											
				4 - пол. 1400об/мин [кВт]	FR1 [кН]	FR2 (M) [кН]												
<b>A303</b> <b>F303</b> <b>W</b>  1  <b>+ PAM - IEC</b>  1	282.17	5.0	300	0.16	1.4	6.6	63	71										
	227.56	6.2	300	0.19	1.4	6.6	63	71										
	205.01	6.8	300	0.21	1.4	6.6	63	71										
	165.33	8.5	300	0.27	1.4	6.6	63	71										
	141.89	9.9	300	0.31	1.4	6.6	63	71	80	90								
	125.65	11.1	300	0.35	1.3	6.6	63	71										
	114.42	12.2	300	0.38	1.3	6.6	63	71	80	90								
	86.96	16.1	300	0.51	1.3	6.6	63	71	80	90								
	76.42	18.3	300	0.58	1.3	6.6	63	71	80	90								
	61.63	22.7	300	0.71	1.3	6.6	63	71	80	90								
<b>A302</b> <b>F302</b> <b>W</b>  1  <b>+ PAM - IEC</b>  1	55.03	25.4	280	0.75	1.3	6.6	71	80	90									
	48.22	29.0	280	0.85	1.2	6.6	71	80	90									
	44.38	31.5	280	0.93	1.2	6.6	71	80	90									
	38.33	36.5	280	1.07	1.2	6.6	71	80	90									
	34.62	40.4	280	1.19	1.2	6.6	71	80	90									
	30.91	45.3	280	1.33	1.1	6.6	71	80	90									
	27.92	50.1	280	1.47	1.1	6.6	71	80	90									
	26.45	52.9	260	1.44	1.1	6.6	71	80	90	100	112							
	23.49	59.6	260	1.62	1.0	6.3	71	80	90									
	21.33	65.6	250	1.72	1.0	6.1	71	80	90	100	112							
	19.29	72.6	250	1.90	1.0	5.8	71	80	90	100	112							
	16.21	86.3	250	2.26	0.9	5.4	71	80	90	100	112							
	13.81	101.4	250	2.65	0.8	5.0	71	80	90	100	112							
	12.00	116.7	250	3.05	0.7	4.7	71	80	90	100	112							
	10.50	133.4	240	3.35	0.6	4.5	71	80	90	100	112							
	9.11	153.7	210	3.38	0.6	4.4	71	80	90	100	112							
7.34	190.6	160	3.19	0.7	4.4	71	80	90	100	112								
5.58	250.8	160	4.20	0.4	3.9	71	80	90	100	112								
<b>A301</b> <b>F301</b> <b>W</b>  1  <b>+ PAM - IEC</b>  1	8.88	157.7	55	0.91	1.2	1.0	71	80	90									
	7.78	180.0	50	0.94	1.2	1.0	71	80	90									
	6.18	226.5	50	1.19	1.2	0.9	71	80	90									
	5.58	250.7	50	1.31	1.2	0.9	71	80	90									
	5.08	275.8	45	1.30	1.2	0.9	71	80	90									
	4.27	328.1	45	1.55	1.1	0.8	71	80	90									
	3.65	383.9	45	1.81	1.1	0.8	71	80	90									
	3.16	443.3	40	1.86	1.1	0.7	71	80	90									
	2.76	506.9	30	1.59	1.1	0.7	71	80	90									
	2.59	540.4	30	1.70	1.1	0.7	71	80	90									
2.04	686.8	25	1.80	1.1	0.7	71	80	90										
1.47	953.2	25	2.50	1.0	0.6	71	80	90										